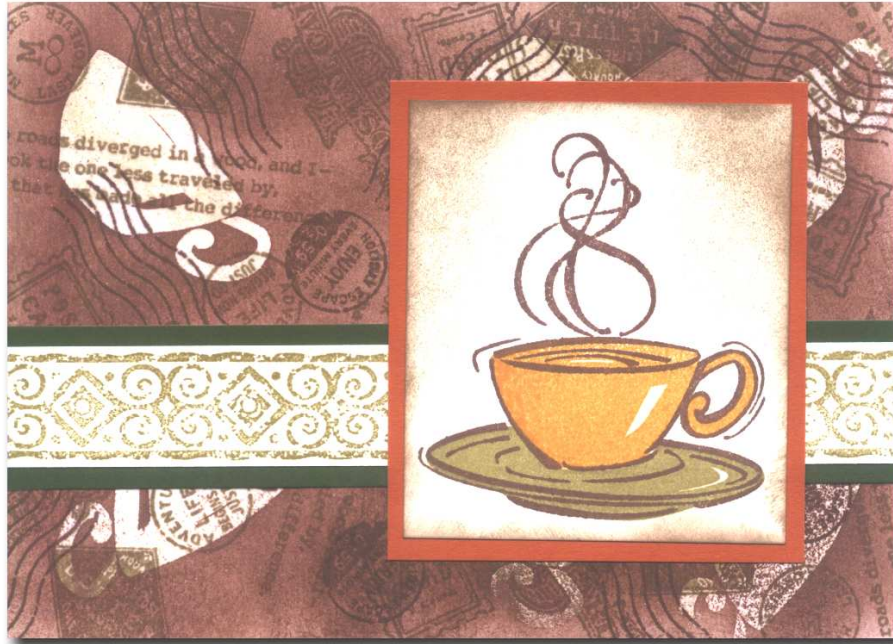


STAMPING SPOT

OCTOBER SAMPLE OF THE MONTH



1. Cut White Daisy cardstock to 10" x 7" and fold in half to make your 5" x 7" card base.
2. Stamp the card base randomly with the Vintage Travel stamp set, using Chocolate ink.
3. Randomly stamp the solid cup image from Coffee Shop with VersaMark ink over your stamped card base, then sprinkle clear embossing powder over it and heat emboss. Sponge Chocolate ink over everything and wipe the excess ink off the clear embossed images.
4. Cut Colonial White cardstock to 1" x 7", and stamp border from the Abundance Borders stamp set in Garden Green. Cut New England Ivy cardstock to 1 1/2" x 7", and use this to mat the border image. Adhere to card base about 1" from the bottom.
5. Cut Colonial White cardstock to 3" x 4", then stamp the solid cup in Honey and the solid saucer in Garden Green. Overstamp the outlines and steam in Chocolate. Sponge the edges of the piece with Chocolate ink, then mat with Autumn Terracotta cardstock. Adhere to the top of the card as shown.

Designs ©CTMH Co.

Jean Cox
Independent Close To My Heart Consultant
808-263-9060
www.StampingSpot.myctmh.com